

# Installation Manual of DDC1002-12800-4G

## Parking List

DDC1002-12800-4G Module (1 piece) Certificate of Compliance (1 piece)

## 1.Product parameters

Model	DDC1002-12800-4G		
OS	Linux	Interface	1x Ethernet, 2x RS485 (Electromagnetic isolation)
CPU	1 Core 750 MHz	Ethernet Ports	1x 10M/100M NIC
RAM	64M	Dimensions/mm	185*119*42 (L×W×H)
Flash	32M	Weight/g	350
Power	≤6W	Material	Plastic Shell
Power Supply	AC/DC 12~24V	Installation	DIN-Rail
Digital Signal	12 DI(Support passive dry contact input), 8 DO(Support dry contact output, Up to 220V/5A)		
4G	1x SIM card slot, 4G Unlocked for ALL Carriers		

## 2.Model Description

Model	BI/DI	BO/DO	AI	AO
DDC1002-12800-4G	12	8	0	0
Description	Support passive dry contact input	Support dry contact output		

## 3.Register Definition Explanation

### BI/DI—Digital Input

BI/DI Register Address	BI/DI Port	Description
1	DI1	Digital Input port
2	DI2	Digital Input port
3	DI3	Digital Input port
4	DI4	Digital Input port
5	DI5	Digital Input port
6	DI6	Digital Input port

BI/DI Register Address	BI/DI Port	Description
7	DI7	Digital Input port
8	DI8	Digital Input port
9	DI9	Digital Input port
10	DI10	Digital Input port
11	DI11	Digital Input port
12	DI12	Digital Input port

### BO/DO—Digital Output

BO/DO Register Address	BO/DO Port	Description
1	DO1	Digital output port
2	DO2	Digital output port
3	DO3	Digital output port
4	DO4	Digital output port
5	DO5	Digital output port
6	DO6	Digital output port
7	DO7	Digital output port
8	DO8	Digital output port

## 4.Wiring Instructions

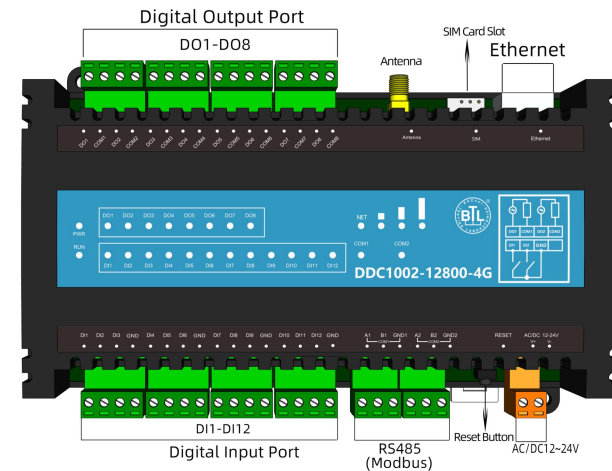


Figure1 Power and Communication Diagram

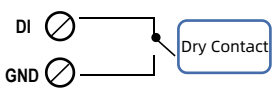


Figure 2 Digital Input

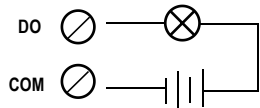


Figure 3 Digital Output

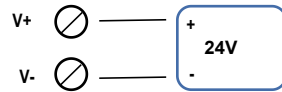


Figure 4 Power connection schematic diagram

5.Product dimensions

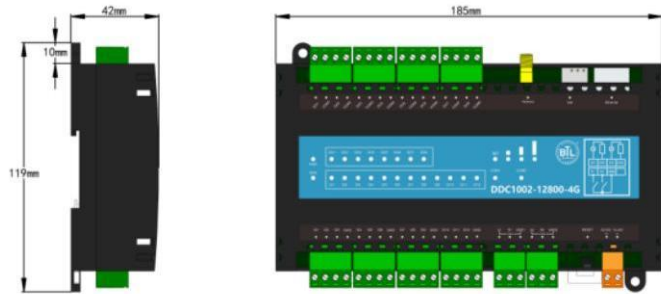


Figure 5 185mm\*119mm\*42mm(LxWxH) Weight :350g

6.Installation Method

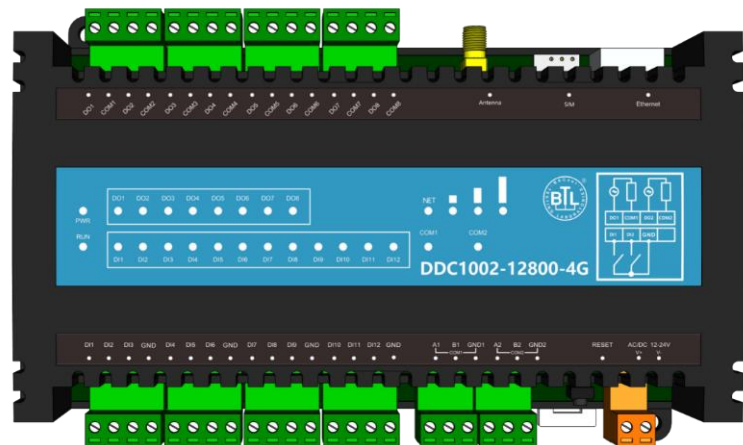
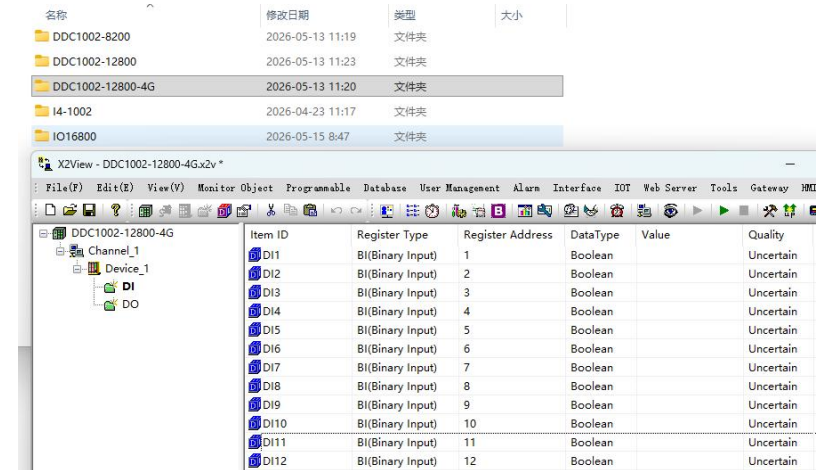


Figure 6 Rail-mounted

FAQ

Q①: How to use the DDC project included with X2View?

A①: Just open the "Samples" folder in the Demo project of the X2View software, upload it to the DDC, and you can directly modify and use it.



Q②: How to modify the IP address?

A②: The default IP address for the product at the factory is 192.168.1.88, subnet mask 255.255.255.0, and default gateway 192.168.1.1.

When the user uses it for the first time, they connect the computer and the product directly with a network cable, and then change the computer's IP address to the same network segment as the product (such as the one on the computer)

Change the IP address to 192.168.1.55), open the browser with the ping gateway IP address, enter the product IP address 192.168.1.88, log in to the product's web server, and set the IP address in the "Network Port Settings" column.

Q③: How to reset the IP?

A③: If user forgets the product's IP address, press and hold the FUN key until three beeps sound. The Ethernet port will temporarily revert to its default IP address. Connect via Ethernet and access <http://192.168.1.88/login.html> to view the original IP address. (This takes effect immediately but is invalidated after power-off.)

The free software: BACnetScan scanning software, OPC2WEB software, X2OPC\_Free software, MBus scanning tools, Lumiscan green rice smart home scanning tools.

Shanghai Sunfull Automation Co., LTD. TEL: +86-021-58776098



Address: Room 603, Building 25, Lane 8633, Zhongchun Road, Qibao town, Minhang district, Shanghai.  
 Technical support Tel: +86 021-20252795  
 Website 1: [www.bacnetchina.com](http://www.bacnetchina.com)  
 SalesTel: +86 13564889340 Contacts: Linda Chen  
 Website 2: [www.opcmaster.com](http://www.opcmaster.com)